

# Coats welcomes you to the World of colour and inspiration

COATS *epic* is a polyester-wrapped thread with a polyester filament core. This combination gives maximum tenacity in the threads as both the fibres and the filament contribute evenly to provide high tensile strength. COATS *epic* is ideal where fineness and high seam strength are required and is the best solution for puckering.

## Main Uses:

- Fashion apparel
- Blouses and shirts
- Jackets and dress slacks
- Lingerie and swim suits
- Uniforms and workwear
- jeanswear
- Various leather articles



## Features and Benefits:

- COATS *epic* is a high-tech corespun thread that combines a high tenacity polyester filament core with a polyester fibre wrap to make a versatile and productive thread.
- COATS *epic* is ideal for both delicate garments as well as jeans and workwear.
- Specially lubricated to deliver outstanding sewing performance in the most demanding applications.
- High strength of polyester filament core allows the use of finer thread sizes, giving better seam appearance and low pucker without sacrificing seam strength.
- Excellent abrasion resistance make COATS *epic* ideal for jeans and workwear.
- Certified to OKO-tex standard 100, class I, the most stringent class covering baby wear.

COATS  
*epic*



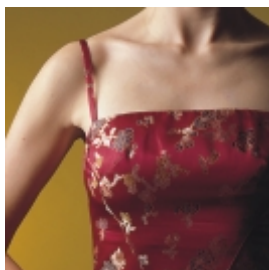
POLYESTER-WRAPPED  
THREAD

Info about the product





Artykuł	Tex	Size dtex	Strenght cN	Elongation %	Make-up m	Needle size Metric	Adoption
COATS <i>epic</i> 180	18	90x2	790	15-16	1 000 5 000	65-70	curtains, underwear, clothes from fine textile and knitwear, with elastomer's yarns, too
COATS <i>epic</i> 150	21	105x2	980	15-16	1 000 5 000	55-70	
COATS <i>epic</i> 140	24	116x2	950	16-18	1 000 5 000	60-80	
COATS <i>epic</i> 120	27	125x2	1100	17-19	1 000 5 000	80-90	
COATS <i>epic</i> 100	30	160x2	1450	17-19	1 000 5 000	80-100	women's, men's and sport clothes, sewing buttonholes
COATS <i>epic</i> 80	40	208x2	1900	18-20	1 000 5 000	80-100	
COATS <i>epic</i> 60	60	275x3	2700	20-23	5 000	90-110	sport clothes and workwear
COATS <i>epic</i> 40	80	375x2	3800	21-22	5 000	120-140	jeans; leather's articles, upholstery furnitures, tents, vesicles gallantry
COATS <i>epic</i> 30	105	375x3	5800	22-23	5 000	120-140	



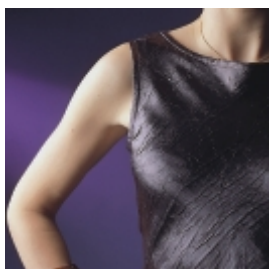
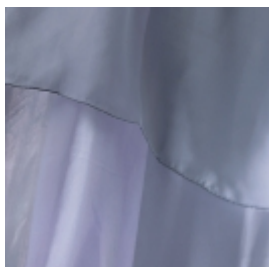
### Physical and chemical properties of staple spun polyester:

#### Thermal Properties :

- Melts at 250 - 260°C, softens at 220 - 240°C
- Shrinkage less than 1% at 150°C

#### Chemical Properties:

- Mineral acids: Resistant to most mineral acids
- Alkalis: Essentially unaffected by weak alkalis, but less resistant to stronger alkalis, Especially at higher temperatures
- Organic solvents: Generally unaffected, but soluble in some phenolic compounds
- Bleaching: Unaffected
- Insects / Microorganisms (mildew, rot): Unaffected
- Laundering / Dry cleaning: Unaffected
- Moisture regain: 0,4%



#### COATS *epic* - fastness properties:

Wash Fastness:	(ISO 105 Co3)	Grade4
Water Fastness:	(ISO 105 E01)	Grade4
Rub Fastness	(ISO 105 X12)	Grade4
Hypochlorite Fastness:	(ISO 105 No1)	Grade4
Dry Cleaning Fastness:	(ISO 105 D01)	Grade4
Perspiration Fastness:	(ISO 105 Eo4)	Grade4
Light Fastness:	(ISO 105 B02)	Grade4



Coats Polska

Coats Polska Sp. z o.o., ul. Kaczeńcowa 16, 91-214 Łódź

Tel.: +48 42 640 50 53, Fax +48 42 640 51 16

www.coats.pl

POLYESTER-WRAPPED  
THREAD

Info about the product

