

Coats welcomes you to the World of colour and inspiration

COATS *dual duty* (earlier known as koban) is top quality corespun thread that combines a high tenacity polyester filament core with a natural cotton cover. The filament core offers excellent strength and durability, while the long staple cotton wrap ensures excellent sewing performance and protects core from needle heat.

Main Uses:

- Fine cotton, denim shirts and suits
- Fine fabrics and premium lingerie
- Leather goods, towels and home furnishings
- Classic jeans and outdoor wear



Features and Benefits:

- **COATS *dual duty*** is a high-tech corespun thread that combines the tenacity and strength of a polyester filament core with a cotton wrap, delivering excellent sewing performance in the most demanding applications.
- Special lubricants ensure smooth, trouble-free sewing.
- Cotton wrap protects polyester core from needle heat and high ironing temperatures.
- Controlled elongation dramatically reduces seam pucker.
- Excellent wash-down characteristics make **COATS *dual duty*** ideal for jeans.
- Strong polyester filament core allows the use of finer thread sizes improving seam appearance without sacrificing seam strength.
- Certified to OKO-tex standard I, class I, the most stringent class covering babywear.
- Outstanding abrasion resistance for demanding jean and workwear applications.

COATS
dual duty



**POLYESTER CORESPUN
WITH COTTON WRAP**

Info about the product





Article / Tkt	Tex	Size dtex	Strenght cN	Elongation %	Make-up m	Needle size Metric	Adoption
COATS <i>dual duty</i> 120	24	125x2	970	19-21	5 000	70-75	for production of gentle clothes, underwear and and bathing costumes
COATS <i>dual duty</i> 75	40	200x2	1700	19-21	5 000	80-90	for sewing of jeans, trousers, corsets, bathing costumes, knitwears, underwear and gentle confection
COATS <i>dual duty</i> 50	60	200x3	2700	21-22	5 000	90-110	for sewing workwear, jeans, leather clothes and gallantry, shoes and protective clothing
COATS <i>dual duty</i> 36	80	400x2	3600	21-22	5 000	110-130	for sewing upholstery furnitures, tents, tarpaulins
COATS <i>dual duty</i> 25	105	400x3	5200	22-23	2 500	110-130	For sewing heavy leather clothing, tents, upholstery furnitures, sewing carpets

**POLYESTER CORESPUN
WITH COTTON WRAP**



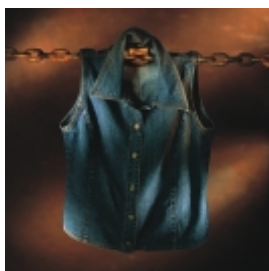
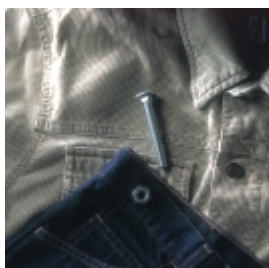
Physical and chemical properties of polyester corespun with cotton wrap:

Własności termiczne:

- Polyester melts at 250 - 260°C, softens at 220 - 240°C
- Cotton discolours after prolonged exposure to high temperatures
- Thread shrinkage less than 1% at 150°C

Chemical Properties:

- Mineral acid: **Polyester:** is resistant to most mineral acid
Cotton: disintegrates in hot dilute and cold concentrated acid
- Alkalis: **Polyester:** essentially unaffected by weak alkalis, but less resistant to stronger alkalis, especially at higher temperatures
Cotton: swells in caustic, no appreciable strenght loss
- Organic: **Polyester:** generally unaffected, but soluble in solvents: some phenolic compounds
Cotton: degraded by some solvents
- Bleaching: **Polyester:** unaffected
Cotton: bleached by hypochlorite and peroxides
- Insects/
Microorganisms
(mildew, rot): **Polyester:** unaffected
Cotton: degrades but can be treated with special finishes
- Laundering/
dry cleaning: unaffected
- Moisture regain: **Polyester:** 0,4%
Cotton: 8%



COATS *dual duty* - fastness properties:

Wash Fastness:	(ISO 105 CO3)	Grade4
Water Fastness:	(ISO 105 E01)	Grade4
Rub Fastness	(ISO 105 X12)	Grade4
Hypochlorite Fastness:	(ISO 105 No1)	Grade4
Dry Cleaning Fastness:	(ISO 105 D01)	Grade4
Perspiration Fastness:	(ISO 105 EO4)	Grade4
Light Fastness:	(ISO 105 Bo2)	Grade4



Coats Polska

Coats Polska Sp. z o.o., ul. Kaczeńcowa 16, 91-214 Łódź

Tel.: +48 42 640 50 53, Fax +48 42 640 51 16

www.coats.pl

Info about the product

